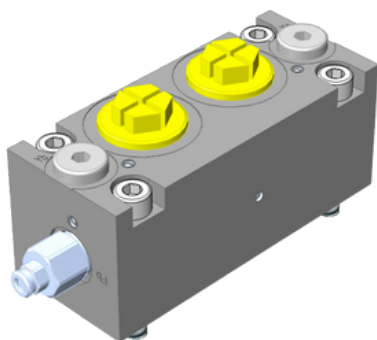


New Connection Block for APV16: AP-1630-545

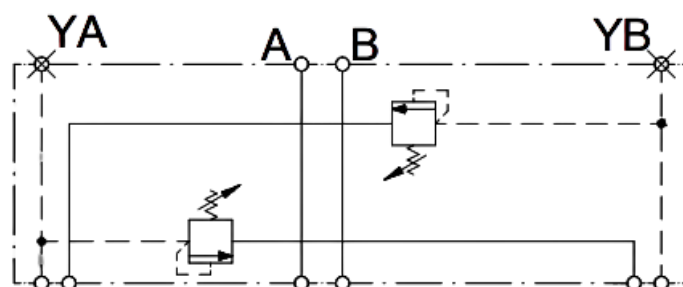
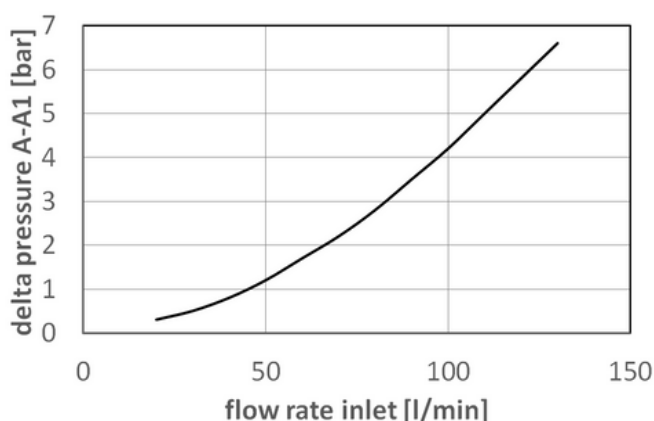


Key Features:

- connection Block with A and B ports
- measuring ports Ya and Yb.
- BSP threaded
- cut off pressure setting of LS line
- easy pressure setting via allen key (protected version available)
- other port sizes and threads available on request

Hydraulic Characteristics:

- pressure setting range: 10-420 bar
- delta pressure: pls. see diagram
- N/N for pressure range 31-100 bar
- B/B for pressure range 101-250 bar
- G/G for pressure range 251-420 bar



NEW!!!

USPs:

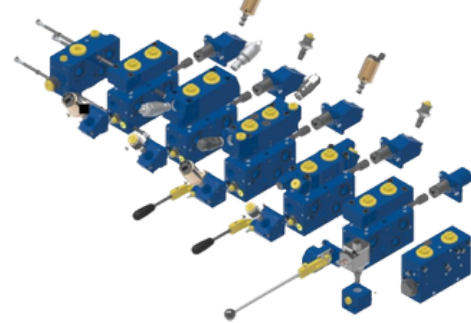
- adapted pressure setting range (3x)
- improved pressure setting accuracy
- enhanced long term pressure stability
- less internal leakage
- easy interchangeability of the relief valve in the field

Order Information:

- 1) AP-1630-545-B/B; item#: 1448734
 - 2) AP-1630-545-G/G; item#: 1449360
 - 3) AP-1630-545-N/N; item#: 14493359
- list price: pls. refer to official price list
 - weight: 2,421 kg

AP-1630-545 is an improved version of the AP-1630-524, that still is available

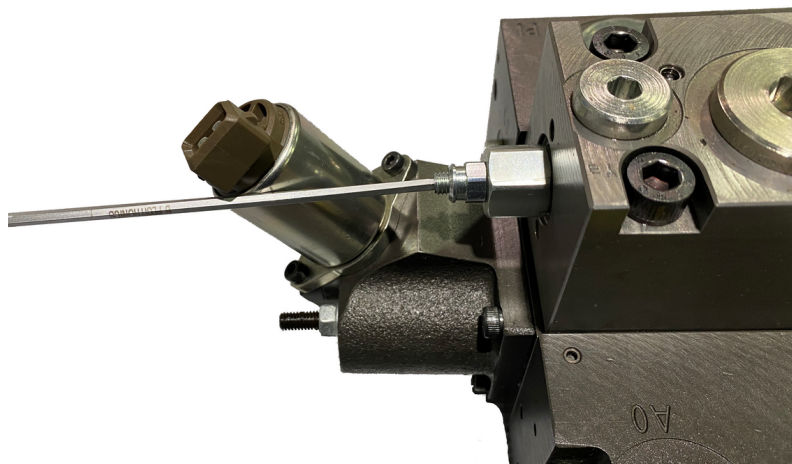
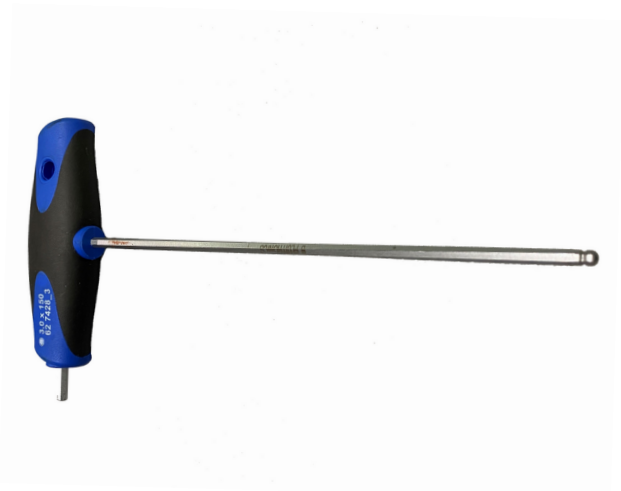




New Connection Block for APV16: AP-1630-545

How to do the Setting

NEW!!!



Dimensional Drawing

